


# **AUTOMATIC TELESCOPIC LANDING DOOR USER AND INSTALLATION MANUAL**



## Contents

<b>Warning and Suggestions</b> .....	<b>2</b>
<b>1. Introduction</b> .....	<b>3</b>
<b>1.1. Usage Manuel and Maintenace Instructions</b> .....	<b>3</b>
<b>1.1.1. Usage Manuel</b> .....	<b>3</b>
<b>1.1.2. Maintenace Instructions</b> .....	<b>3</b>
<b>2. Parts List</b> .....	<b>4</b>
<b>3. Landing Door Common Measures</b> .....	<b>5</b>
<b>4. Instalation</b> .....	<b>6</b>
<b>4.1. Frame Instalation</b> .....	<b>6</b>
<b>4.1.1. Instalation Manuel For Landing Door</b> .....	<b>6</b>
<b>4.2. Instalation of Mechanism and Tread</b> .....	<b>7</b>
<b>4.2.1. Instalation Of Mechanism To The Frame</b> .....	<b>7</b>
<b>4.2.2. Connection Off Sill To A Sill Plate</b> .....	<b>7</b>
<b>4.3. Bracket - Wall Fixing</b> .....	<b>8</b>
<b>4.3.1. Instalation Of Landing Door To The Wall</b> .....	<b>9</b>
<b>4.4. Panel Fixing Detail</b> .....	<b>10</b>
<b>4.4.1. Panel Conection To A Mechanism:</b> .....	<b>10</b>
<b>4.4.2. Panel Connection To A Sill</b> .....	<b>10</b>
<b>4.5. Door Release Lock Instalation</b> .....	<b>11</b>
<b>4.6. Adjustment Of Panels</b> .....	<b>12</b>
<b>4.7. Panel Detail</b> .....	<b>13</b>
<b>4.8. Lock Detail</b> .....	<b>14</b>

## Warning and Suggestions

	For long service life and to ensure that your installation has a faultless, please read carefully and follow the introductions.
---	---

- Only the qualified staff should make the instalation.
- Distribution and any partial or whole reproduction of all the instructions, informations, details and drawings which are mentioned in this manual requires permission from HKS HAS ASANSÖR A.Ş.
- Dimensions are given for referance. HKS HAS ASANSÖR A.Ş. keeps the right to make any changes without notice .
- The manufacturer HKS HAS ASANSÖR A.Ş. will not hold any responsibility for possible damages arising from improper use of the product.
- Keep this manual as long as you use the product.
- The warranty of these products valid for 2 years.
- Thank you for your attention and prefer our products.

ELEVATOR

## 1. Introduction

LANDING DOOR, Designed for entrances and exits of cabin on the floors.  
Adequate to meet the usage circumstances.

### 1.1. Usage Manuel and Maintenance Instructions

#### 1.1.1. Usage Manuel

- 1) Always check whether the cabin is on the floor before entering
- 2) When door starts to close, do not stop it by any means.
- 3) Maket he maintenance according to standards.
- 4) Only the qualified staff should make the instalation.
- 5) Keep this manual as long as you use the product.
- 6) Prevent the children younger than 12 years old to enter the elevator alone.
- 7) Obey the writen instructions of the instalation / maintenace company when stuck between floors.
- 8) To prevent possible damages when handling use forklifts.
- 9) Do not try to open the doors in different ways than instructed.
- 10) Be sure that the product is not damaged in transportation.
- 11) The manufacturer HKS HAS ASANSÖR A.Ş. will not hold any responsibility for possible damages arising from improper use of the product.

#### 1.1.2. Maintenance Instructions

- 1) Always clean the chanel of the sill with grease and don't forget to dry it.
- 2) Do not step on any part of the mechanism.
- 3) To prolong the life of the hanger wheels, keep the top track clean.
- 4) Never apply grease to top tracks.
- 5) Periodicaly chek the wheels and tracks to prevent vibrations and wear.
- 6) Periodicaly chek the steel rope that gives move to panel if it has sings of wear.
- 7) Only the authorised companies qualified staff should intervene to mechanism.
- 8) Peridicaly check if the distance of the electric contact just before closing is 7mm and after closing is 14mm. (EN 81-20 5.3.9.1.2)

## 2. Parts List

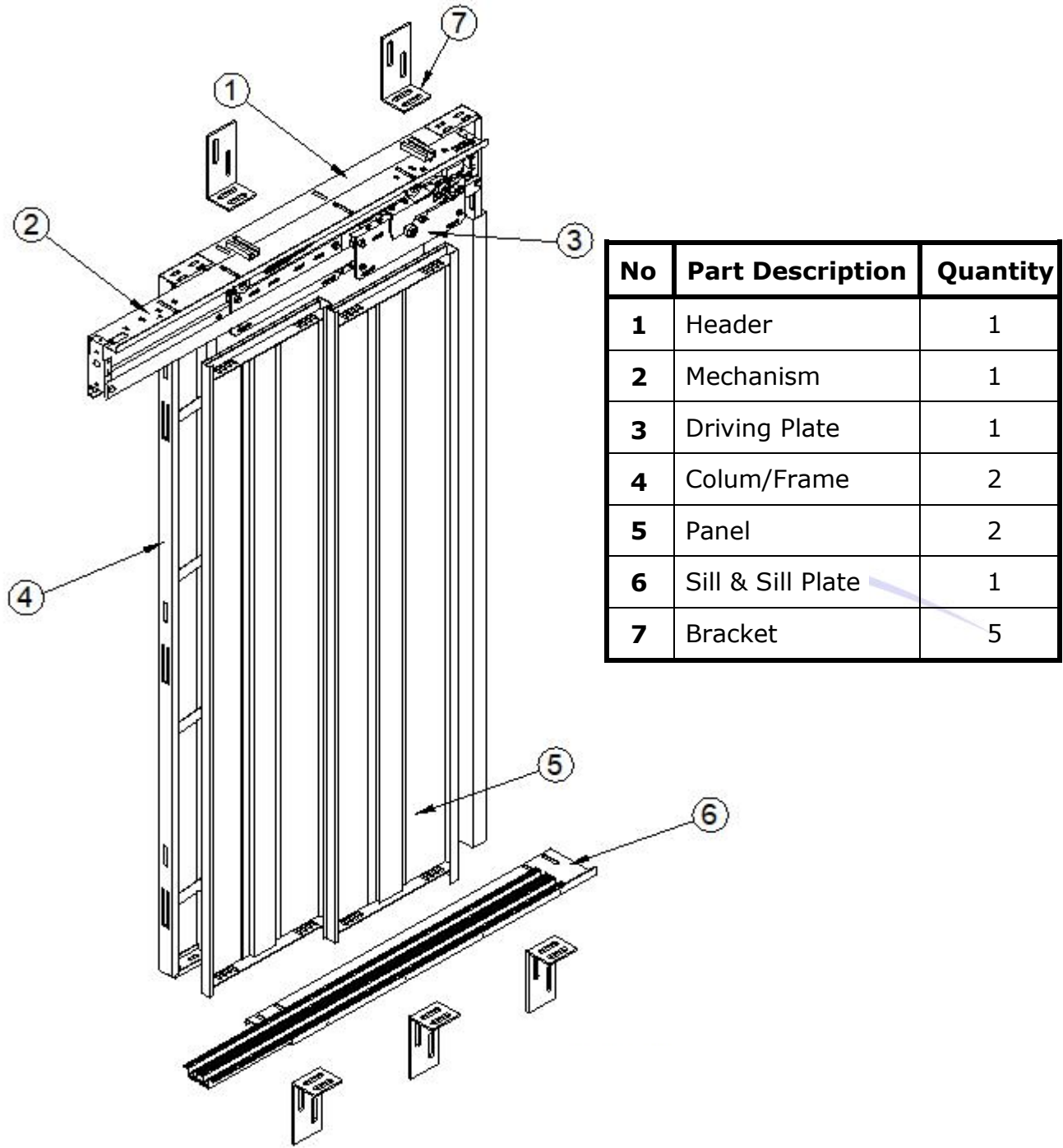
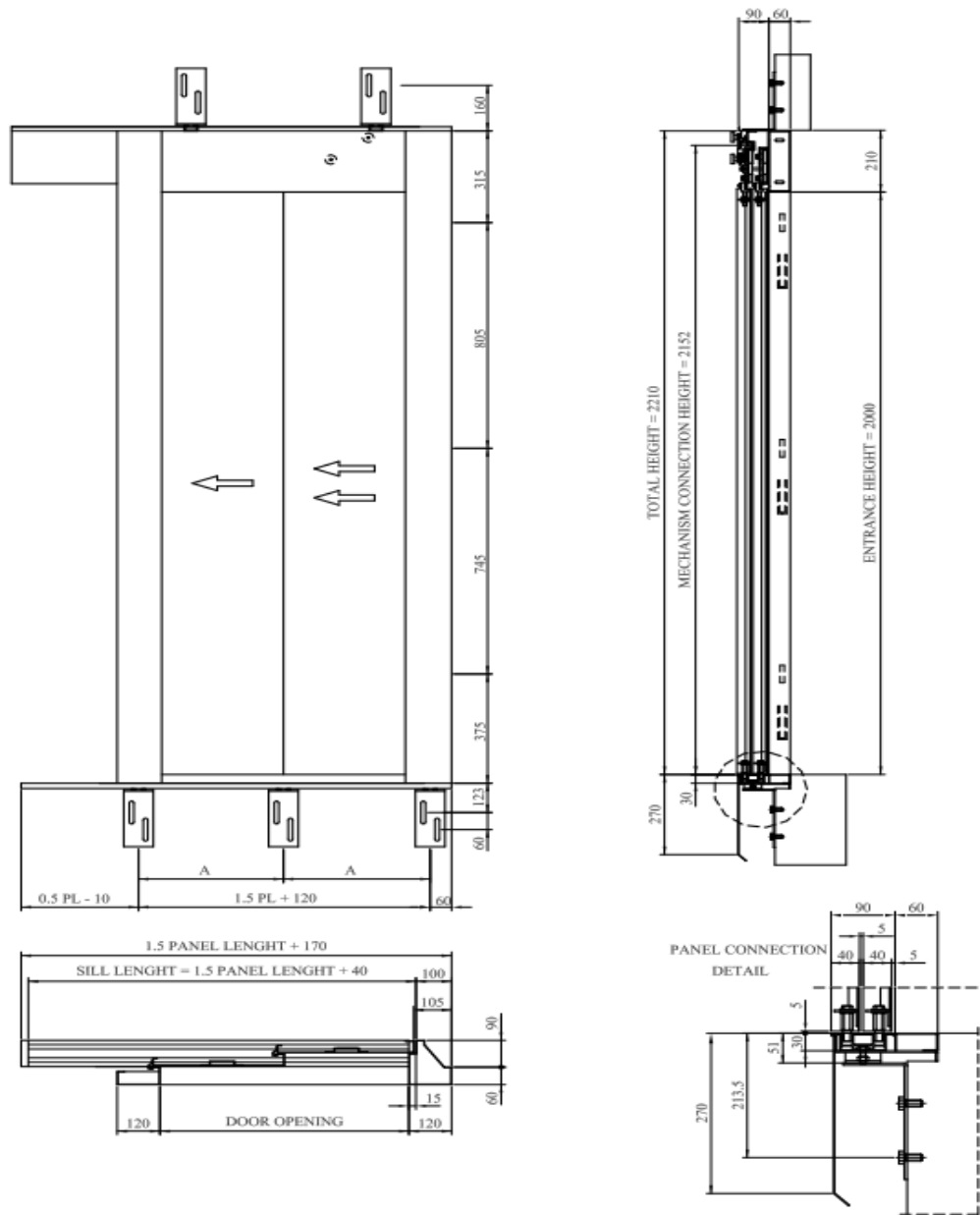


Figure 1

### 3. Landing Door Common Measures



CLEAR OPENING	600	650	700	750	800	850	900	1000	1100	1200	1300	1400
A	360	385	410	435	460	485	340	373	407	330	355	380
S	3	3	3	3	3	3	3	4	4	4	4	5
T	6	6	6	6	6	6	6	8	8	8	8	10

S : Sill bracket quantity

T : Total bracket quantity

Figure 2

## 4. Instalation

### 4.1. Frame Instalation

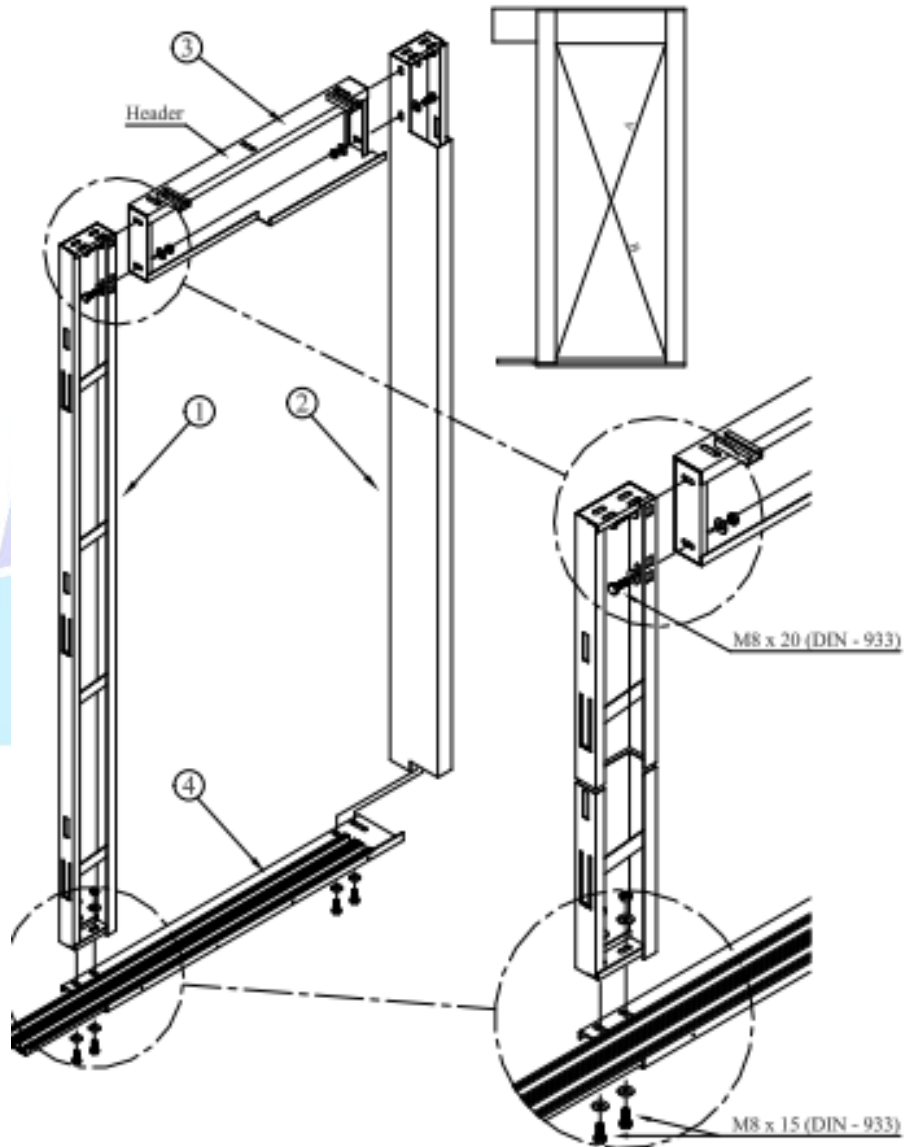


Figure 3

#### 4.1.1. Instalation Manual For Landing Door

- Install the equipment by their numbers given on the figure 3.
- Connect the part nr.2 to nr.3 with M8x20 (DIN-933) bolt & M8 washer. Do not tighten too much.
- Connect the part nr.4 to nr.1 & nr.2 parts with M8 x15 (DIN-933) bolt & M8 washer do not tighten (strongly) too much.

## 4.2. Instalation of Mechanism and Tread

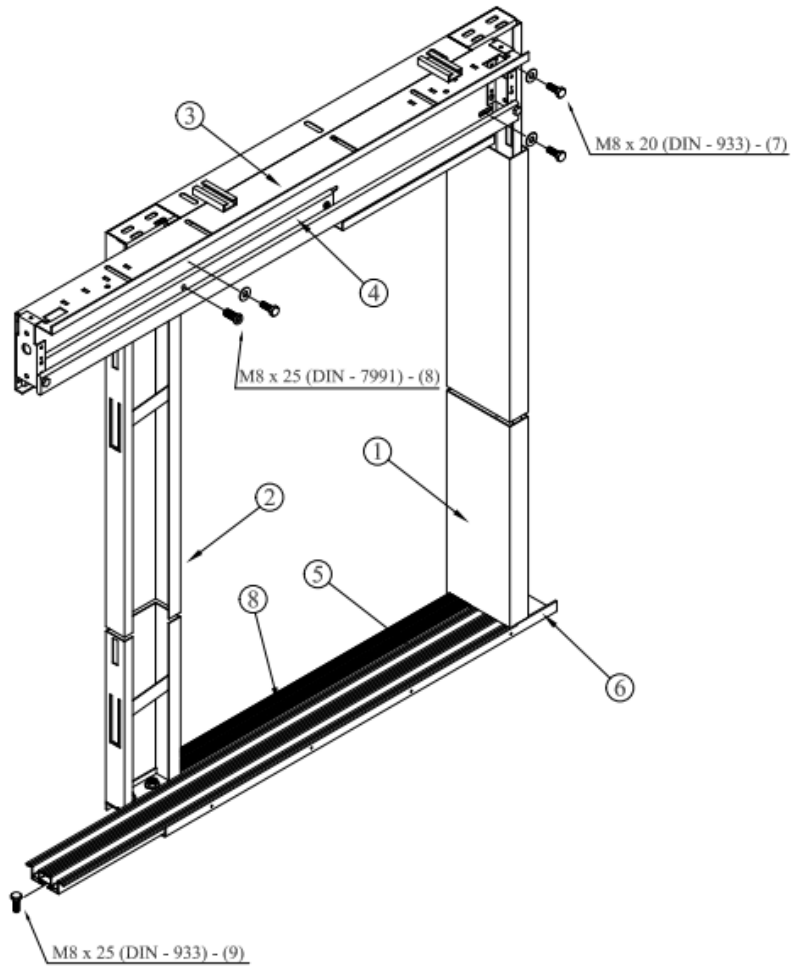


Figure 4

### 4.2.1. Instalation Of Mechanism To The Frame

As mentioned on the drawing in the figure 4 adjust the holes of parts nr. 1 & 2 with the holes of 3 & 4 and connect them with connection parts 7 & 8.

### 4.2.2. Connection Off Sill To A Sill Plate

Insert the connection components (9) to the chanel under the part nr. 5 and install to the holes on part nr. 6.



### 4.3. Bracket - Wall Fixing

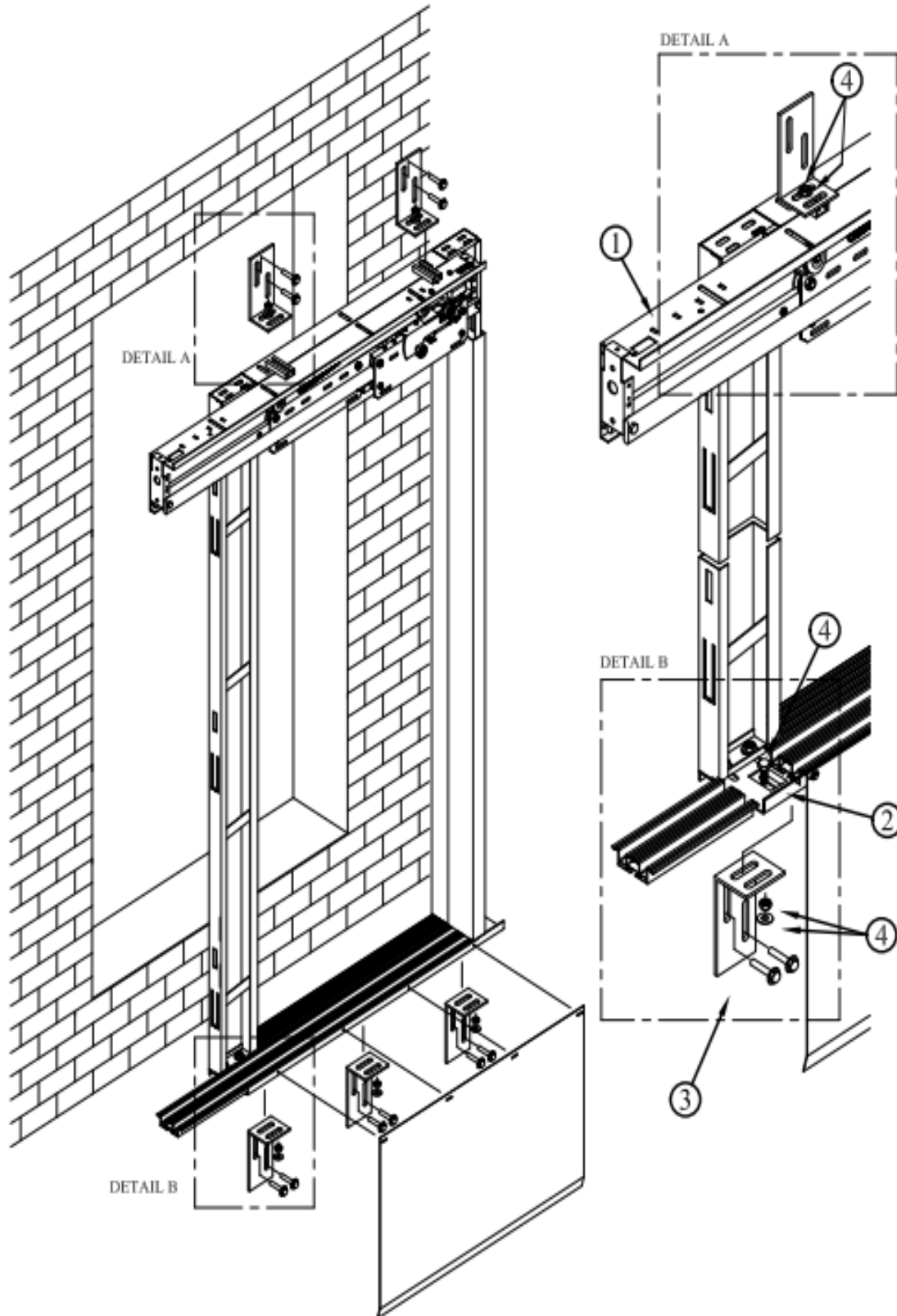


Figure 5

### 4.3.1. Instalation Of Landing Door To The Wall

#### **Bracket - Wall Connection;**

If the template frame will be used : install the template frame to the structure opening & start the instalation.

If the template frame will not be used : take into consideration the structure opening & install.

#### **Sill Plate Connection Brackets;**

As in the figure 5 detail B was shown. Wall plug & brackets hould be installed to wal with nr. 3 & connection components.

**\* When fixing the brackets to the wall make square with balance.**

#### **Header Connection Brackets;**

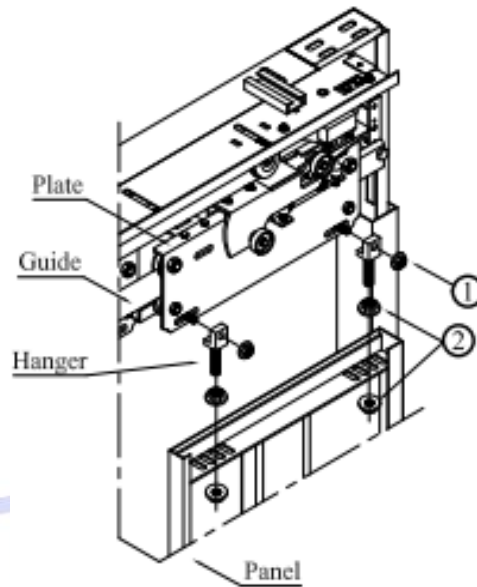
Take the sill brackets as reffarence make the square and install. The header brackets.

HKS

ELEVATOR

## 4.4. Panel Fixing Detail

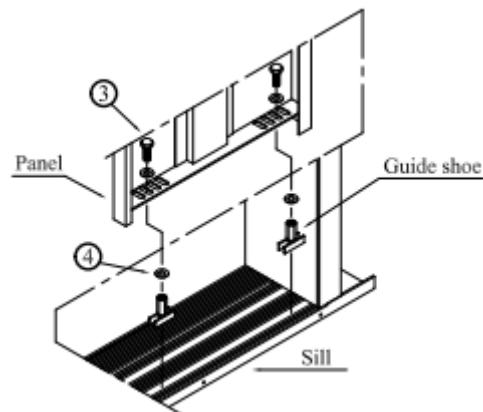
### 4.4.1. Panel Connection To A Mechanism:



**Figure 6**

Install the hangers to the plate by using nr. 1 & nr. 2 connection components. (Figure 6)

### 4.4.2. Panel Connection To A Sill



**Figure 7**

Install the panels total sill by using nr. 3 & nr. 4 connection components.

## 4.5. Door Release Lock Instalation

Unlocking device; usually placed in the upper part of the landing door for automatic doors, next to the lock in manual hinged doors which, by means of a triangular section key, allows the unlocking of the door.

Unlocking device; is a lock apparatus designed for opening the landing door from outside in case of emergency or for maintenance. This lock apparatus has a specific desing which prevents other people than qualified to reach and use this device. For the efficiency in work of this device, it should be protected from wrong usage, 9dust and also should be reachable when making a control or maintenance. The key of this device should be given to qualified persons only.

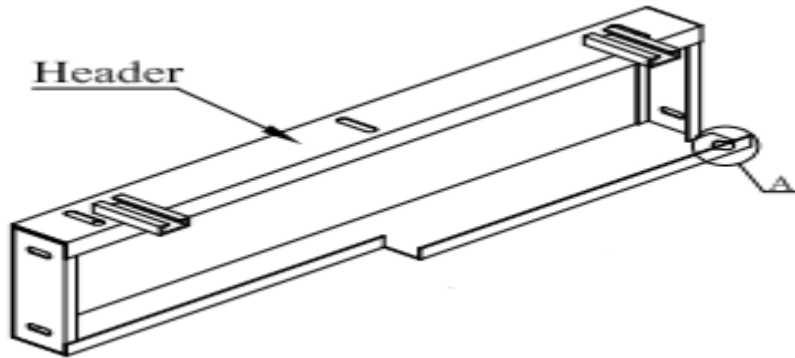


Figure 8

Instaling the unlocking device; As shown on detail A parts nr.1&2 should be placed one inside another and fixed to the bottom of the plate at detail A and screwed with item nr. 3. Place item 4 to item 5 and together place them on item nr. 3 then screw them with items 6 & 7.

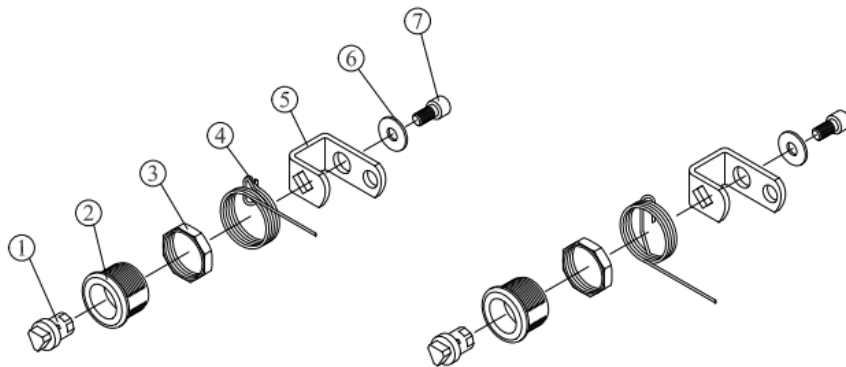


Figure 9

Figure 10

For 2 panel central & right opening loks. (Figure 9)

For 4, 6 , 8 panel central & left locks. (Figure 10)

## 4.6. Adjustment Of Panels

Distance between panel and protective plate must be 5 mm in the fire resistant door types.

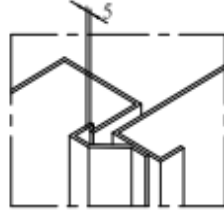


Figure 11

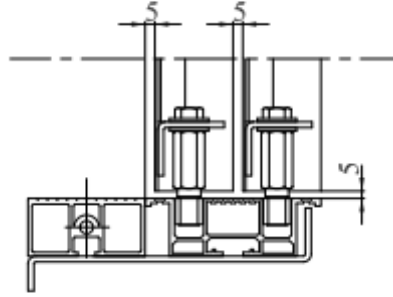


Figure 12

Distance between panels, distance between sills, distance between frame & panels must be 5mm.

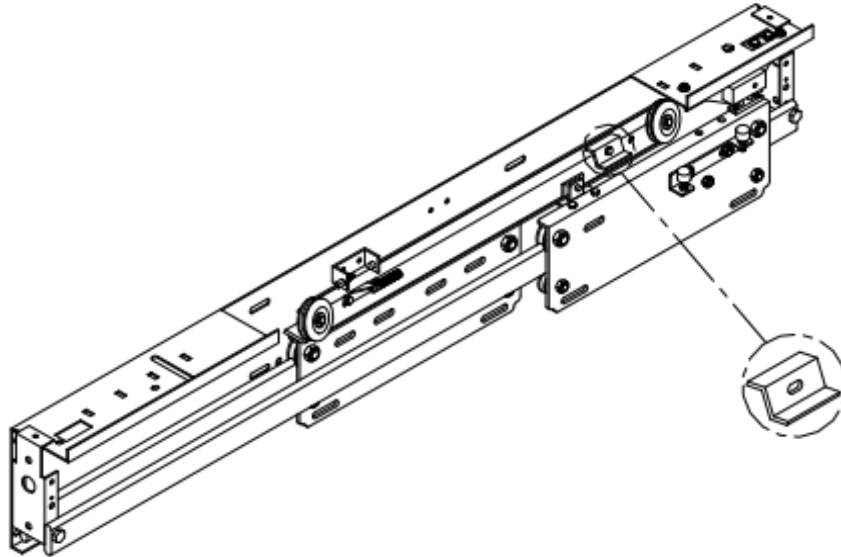
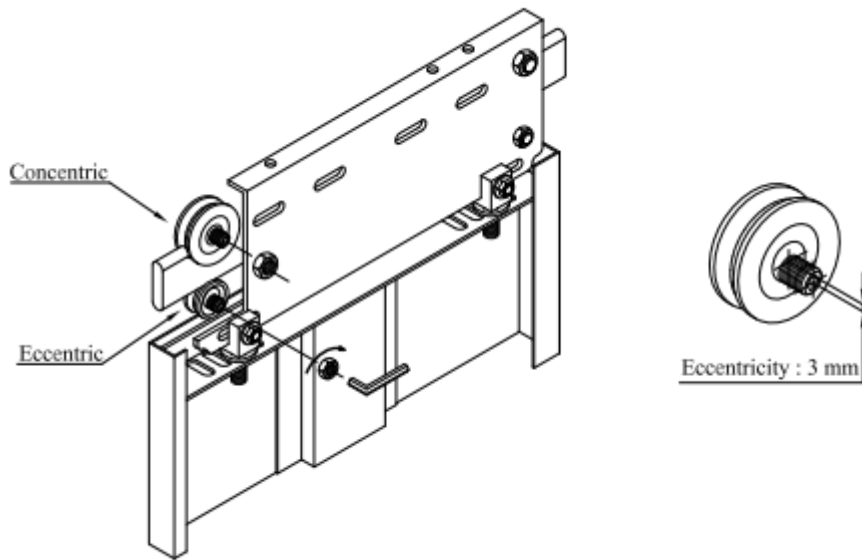


Figure 13

Safety plate - for preventing the door to open manually and to prevent possible accidents.

## 4.7. Panel Detail

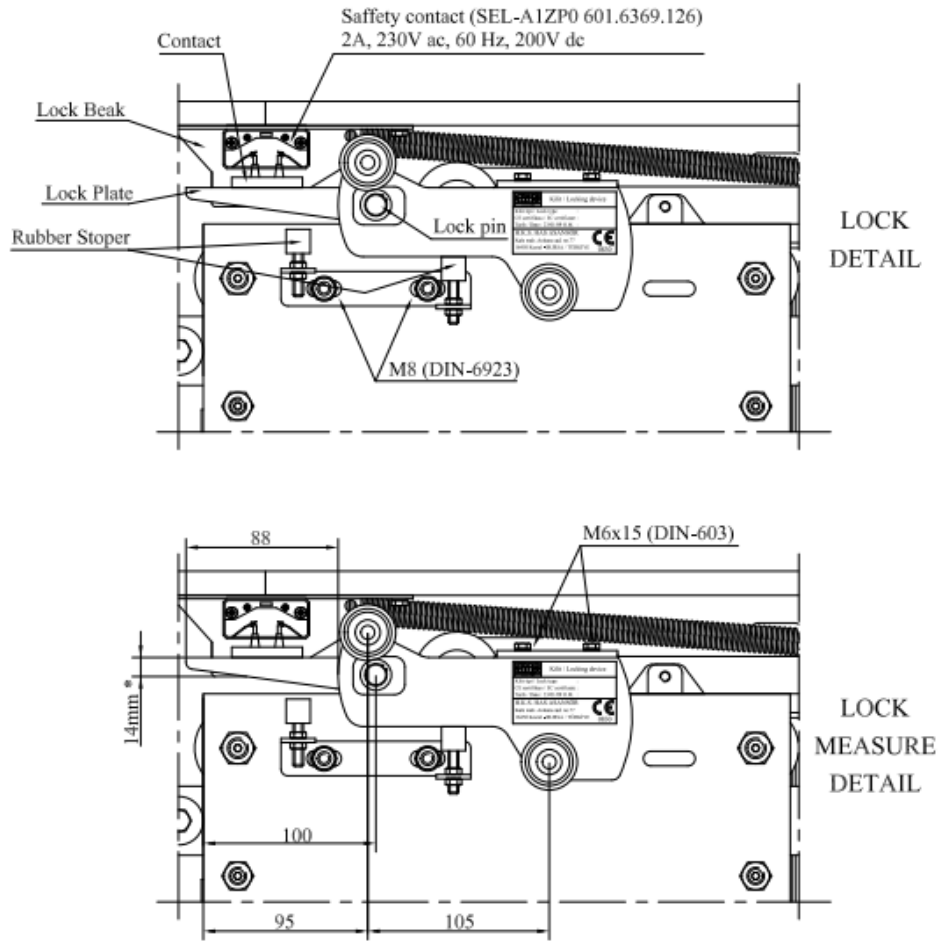


**Figure 14**

Gap between eccentric roller and the rail should be fixed to adjust the panels. This fixing is made by screwing the roller pin by allen key till it touches the rail. When roller touches the rail it means the adjustment has been made properly. (Figure 13)

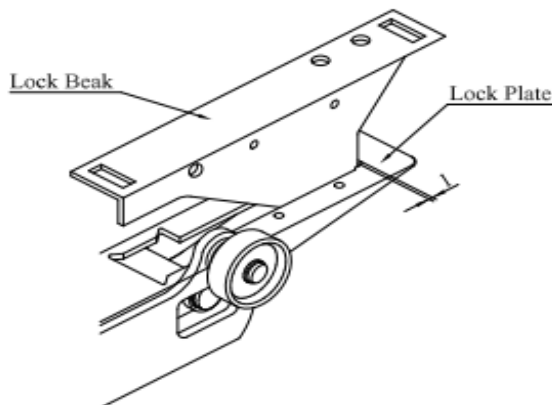
ELEVATOR

## 4.8. Lock Detail

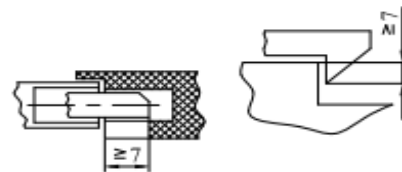


**Figure 15**

\* When electric contact is closed distance between lock beak plate boom point and lock plate up point must be 14mm.



**Figure 16**



**Figure 17**

This door lock is used on both telescopic and central doors.  
When landing door is locked the Lock Beak enters into the Lock Plate 7mm.



**Ankara Caddesi 13. Km No:77 Kestel/Bursa**

**Tel: +90 224 373 10 00 Fax: +90 224 373 10 05**

**e-mail: [info@hasasansor.com](mailto:info@hasasansor.com) – [www.hasasansor.com](http://www.hasasansor.com)**